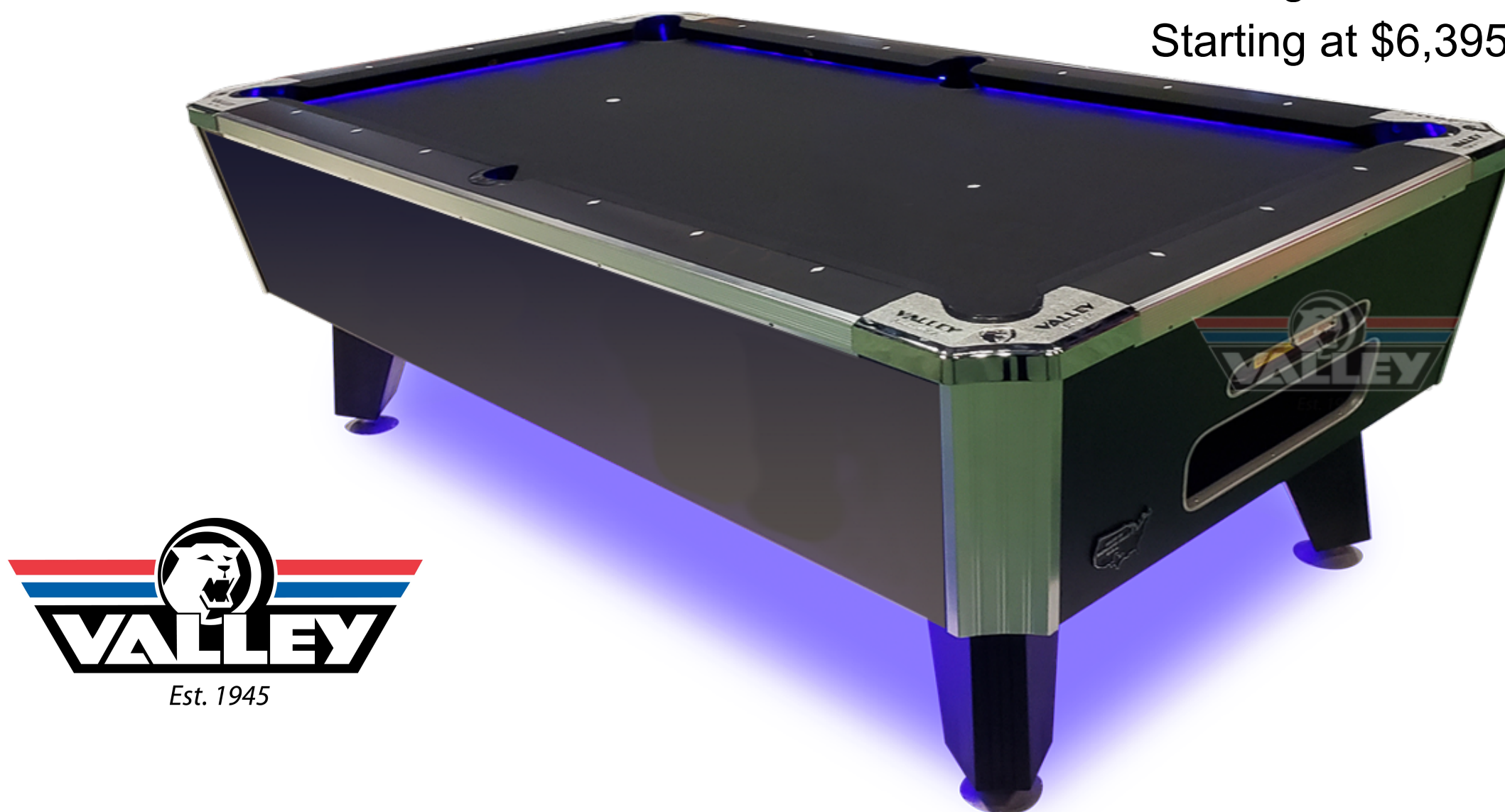


PANTHER LED

Starting at \$5,995 for 88"

Starting at \$6,195 for 93"

Starting at \$6,395 for 101"



We add LED underlighting and pocket lighting to this black beauty of a table. A showpiece in any game room, but with all the proven tournament quality function of the Panther ZD-11.

Black laminate finish with black cloth (**no substitutions**)

The tournament-tested Valley Panther. Perfect for homes, game rooms and locations where coin play may not be a necessity; but durability, great looks and tournament quality play are a must. As found on our popular Panther ZD-11 models, Panther Home features our warm Highland Maple finish, contrasting black top rails with high-visibility white sights, concealed-screw side and end trim, and player-friendly flush-mount corners and pockets.

- Solid aluminum slate support for structural integrity and a flat playing surface
- Available in 88", 93" and 101" sizes
- Five bolt cushion rail system with dual density rubber for consistent play
- Solid one-piece imported slate
- Easily adjusted leg leveler allows one person with a standard wrench to level a table within minutes.
- One piece ball return chute eliminates stuck balls.
- Flush mount corner casting and countersunk pockets for easier play and a smooth appearance
- Concealed-screw aluminum side and end trim
- Highland Maple laminate finish with black top rails (Black Cat finish available)
- Standard Valley Teflon Ultra tournament green cloth (ask about additional colors)
- Cues and balls accessory kit available
- Proudly built in Richland Hills, TX USA!

Panther Highland Maple

- Model HECHM – (Small 6'5")
 - L: 88"
 - W: 50"
 - H: 31"
 - Weight: 605 lbs.
- Model HEBHM – (7' Bar Size)
 - L: 93"
 - W: 53"
 - H: 31"
 - Weight: 670 lbs.
- Model HEAHM – (8')
 - L: 101"
 - W: 56"
 - H: 31"
 - Weight: 845 lbs.
- 3/4" slate on HECHM and HEBHM, 7/8" slate on HEAHM
- Standard Valley Teflon Ultra tournament green cloth (ask about additional colors)